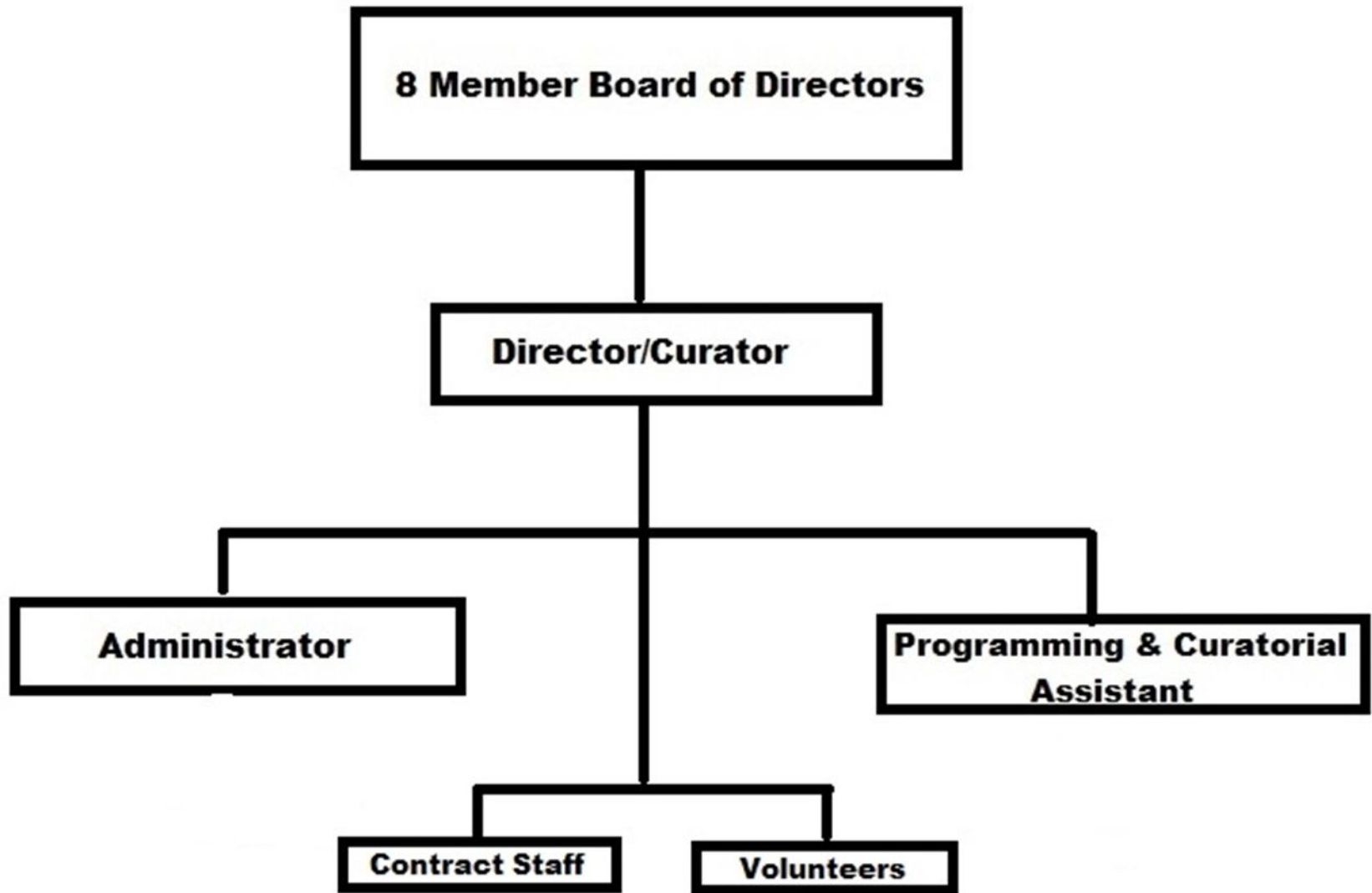


# RiverBrink Art Museum

Request for Financial Assistance 2018



# About RiverBrink

- Number of paid memberships: 167
- Number of Volunteers: 37
- Year-round exhibitions and programming
- 4 – 5 new exhibitions annually
- 2,700 visitors annually
- Daily admission pay what you can



The Request: \$5,000 to support educational programming

## Objectives of Educational Programming at RiverBrink Art Museum:

- To provide recreational, educational and cultural value to residents
- To enhance and enrich the quality of life for area residents
- To build artistic accomplishment
- To strengthen knowledge of local heritage
- To offer programming at a reasonable cost and therefore accessible to residents of all income levels

In recent years, RiverBrink has expanded the number and variety of events and courses to include:

LearnMore

Bus trips

Artist Workshops

Lecture series

Films

Walking tours





Completed Coach House renovations and enhanced studio space

## Rationale for Grant:

- With over 1400 works in the collection, RiverBrink is the only organization in NOTL with an extensive collection of works of art by established professional artists.
- Uniquely positioned to provide enhanced learning and skill development through direct access to the collection.
- Paintings, prints, and drawings depict the local area, inspiring knowledge and appreciation of local heritage.
- Renovated studio space provides barrier-free space year round for hands-on art making.

# Long Term Plan

- Expand and diversify educational offerings
- Include different course lecturers and speakers/topics
- Increase variety of media in studio workshop courses
- Ensure participation is affordable

“Funding from NOTL will help ensure the ongoing sustainability and expansion of the programming initiatives at RiverBrink”

Debra Antoncic PhD, Director/Curator  
RiverBrink Art Museum