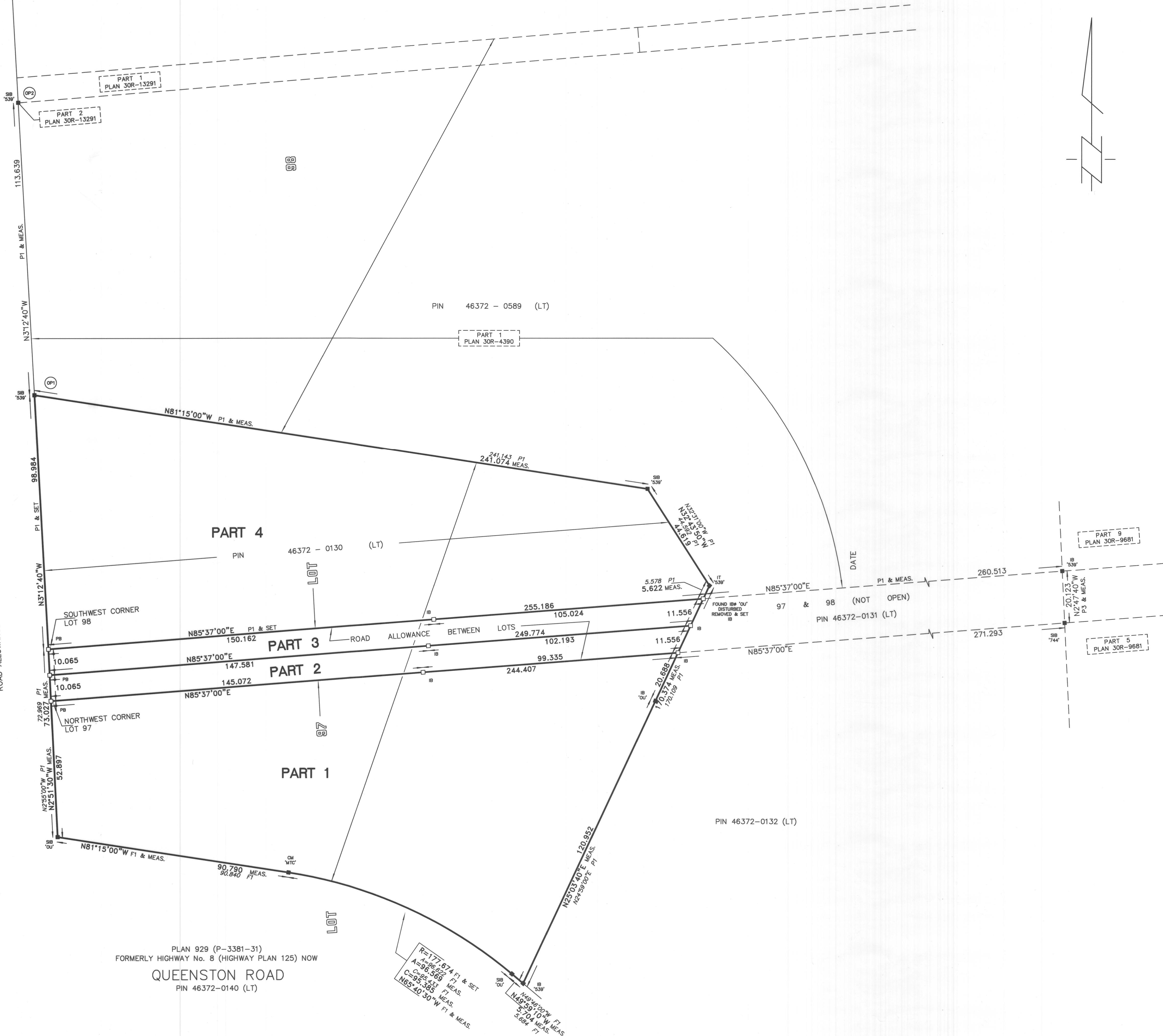


PIN 46372-0076 (LT)
CONCESSION 5 ROAD
ROAD ALLOWANCE BETWEEN LOTS



PLAN 929 (P-3381-31)
FORMERLY HIGHWAY No. 8 (HIGHWAY PLAN 125) NOW
QUEENSTON ROAD
PIN 46372-0140 (LT)

R=177.674 FT & SET
A=86.569 FT
C=65.445 FT
N65°40'30\"W F1 & MEAS.
N49°59'10\"W F1 & MEAS.
S 5.04 MEAS.
S 5.64 F1

I REQUIRE THIS PLAN TO BE
DEPOSITED UNDER THE
LAND TITLES ACT.

DATE: SEPTEMBER 12, 2013.

Mark Gilmore
MARK GILMORE
ONTARIO LAND SURVEYOR

PLAN 30R-14203

RECEIVED AND DEPOSITED
DATE: *Sept. 18, 2013*

R. Lane
REPRESENTATIVE FOR THE LAND REGISTRAR FOR
THE LAND TITLES DIVISION
OF NIAGARA NORTH (30)

SCHEDULE

PART	LOT	PIN
1	PART OF LOT 97	ALL OF 46372-0130 (LT)
2	PART OF THE ROAD ALLOWANCE BETWEEN LOTS 97 & 98	
3		
4	PART OF LOT 98	

PLAN OF SURVEY OF

PART OF LOTS 97 & 98 and
PART OF THE ROAD ALLOWANCE BETWEEN
LOTS 97 & 98

GEOGRAPHIC TOWNSHIP OF NIAGARA, NOW IN THE

TOWN OF NIAGARA-ON-THE-LAKE
REGIONAL MUNICIPALITY OF NIAGARA

SCALE 1:750



LANTHIER & GILMORE SURVEYING LTD.
2013

LEGEND

+	DENOTES SURVEY MONUMENT FOUND	'JEL'	DENOTES LANTHIER & GILMORE SURVEYING LTD.
-	D.G. URE, O.L.S.	'539'	D.G. URE, O.L.S.
SIB	STANDARD IRON BAR	'744'	R.J. MATTHEWS, O.L.S.
SSIB	SHORT STANDARD IRON BAR	'MTC'	MINISTRY OF TRANSPORTATION AND
IB	IRON BAR		COMMUNICATION
IB#	ROUND IRON BAR	'OU'	ORIGIN UNKNOWN
IT	IRON TUBE	P1	PLAN 30R-4390
PB	PLASTIC BAR	P2	PLAN 30R-13291
CC	CUT CROSS	P3	PLAN 30R-9681
CM	CONCRETE MONUMENT	F1	'539' FILE (PART OF LOTS 97 & 98 AND
WT	WITNESS		PART OF THE ROAD ALLOWANCE BETWEEN
			LOTS 97 & 98)

THE LENGTH OF FOUND BARS HAVE NOT BEEN VERIFIED

INTEGRATION DATA

OBSERVED REFERENCE POINTS (OPs) DERIVED FROM GPS OBSERVATIONS
USING THE PRECISE POINT POSITIONING (PPP) SERVICE, UTM ZONE 17,
NAD 83 (CSRS) (1997).

COORDINATES TO URBAN ACCURACY PER SEC. 14 (2)
OF O.REG. 216/10.

POINT ID	NORTHING	EASTING
OP1	4,780,992.78	652,679.45
OP2	4,781,106.22	652,673.09

CAUTION

COORDINATES CANNOT, IN THEMSELVES, BE USED TO RE-ESTABLISH
CORNERS OR BOUNDARIES SHOWN ON THIS PLAN.

BEARING NOTE

BEARINGS ARE UTM GRID, DERIVED FROM SIMULTANEOUS GPS OBSERVATIONS FROM MONUMENTS OP1 TO OP2,
SHOWN HEREON, HAVING A BEARING OF N3°12'40\"W REFERRED TO THE CENTRAL MERIDIAN OF UTM ZONE 17
(81° WEST LONGITUDE) NAD 83 (CSRS) (1997).

NOTE

A CONVERGENCE OF 1' 14' 00\" IN A COUNTER CLOCK-WISE DIRECTION HAS BEEN APPLIED TO BEARINGS ON
PLAN 30R-4390, PLAN 30R-13291, PLAN 30R-9681 AND '539' FILE F1 TO ACCOUNT FOR THE
DIFFERENT REFERENCE MERIDANS.

METRIC NOTE

DISTANCES AND COORDINATES SHOWN ON THIS PLAN ARE IN METRES AND CAN BE CONVERTED TO FEET
BY DIVIDING BY 0.3048.

NOTE

DISTANCES SHOWN ON THIS PLAN ARE ADJUSTED GROUND LEVEL DISTANCES AND CAN BE USED TO COMPUTE
GRID COORDINATES BY MULTIPLYING THE DISTANCES BY A COMBINED SCALE FACTOR OF 0.99987378.

SURVEYOR'S CERTIFICATE

I CERTIFY THAT:

- THIS SURVEY AND PLAN ARE CORRECT AND IN ACCORDANCE WITH THE SURVEYS ACT,
THE SURVEYORS ACT AND THE LAND TITLES ACT AND THE REGULATIONS MADE UNDER THEM.
- THE SURVEY WAS COMPLETED ON SEPTEMBER 9, 2013.

DATE: SEPTEMBER 12, 2013

Mark Gilmore
MARK GILMORE
ONTARIO LAND SURVEYOR

LANTHIER & GILMORE SURVEYING LTD.
173 CLAREBORNE ST. PORT COLBORNE, ONT. (905) 835-5477

SCALE: 1:750 DR. BY: CM CH. BY: DM JEL FILE: 21-079 F-932