

**SKETCH TO SHOW**  
 PART OF LOTS 154 AND 155  
 GEOGRAPHIC TOWNSHIP OF NIAGARA  
 TOWN OF NIAGARA-ON-THE-LAKE  
 REGIONAL MUNICIPALITY OF NIAGARA  
 SCALE = 1 : 2000 METRIC

Appendix "D"

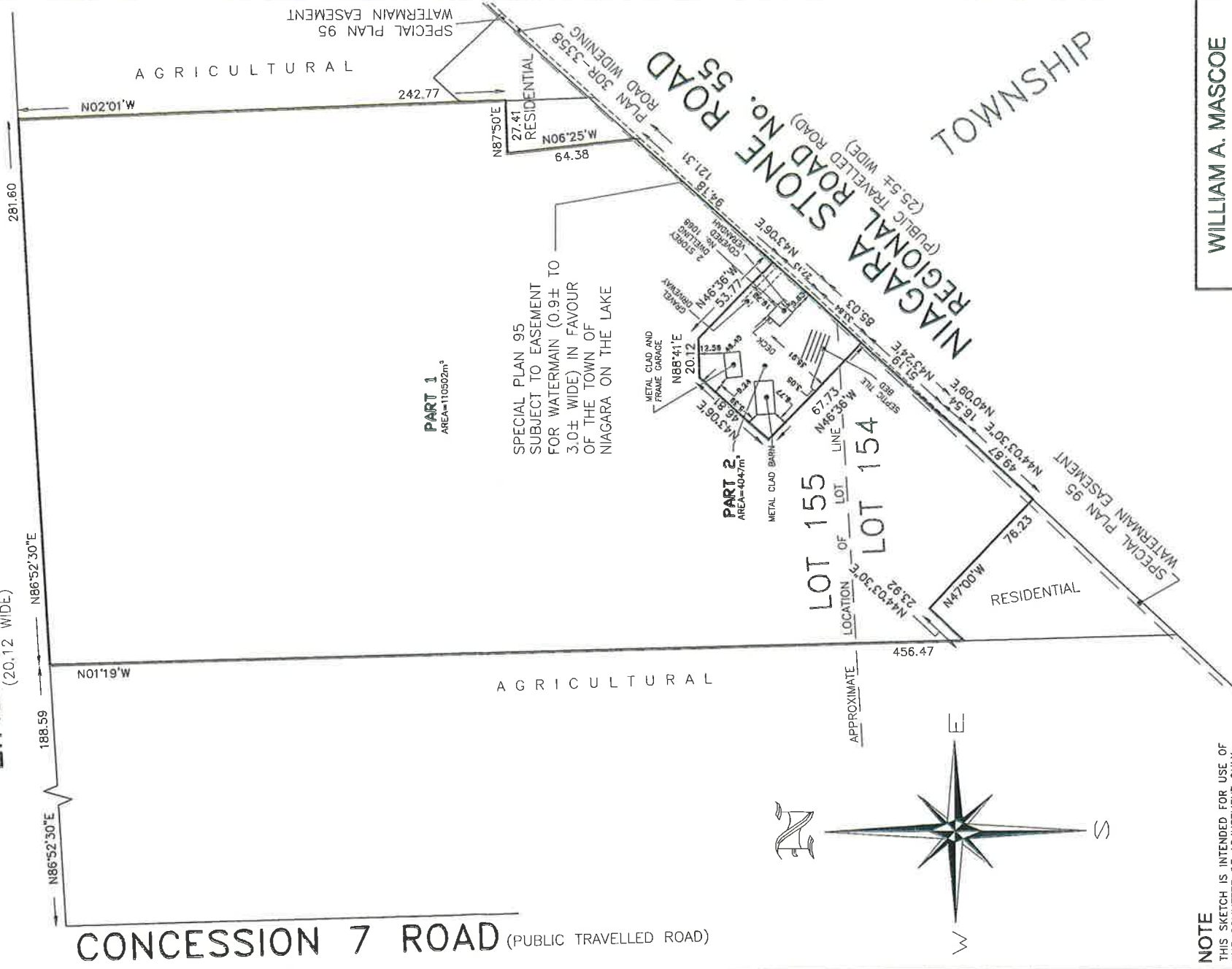
**REVISED**

**RECEIVED**  
 SEP 07 2012  
*[Signature]*

TOWN OF NIAGARA-ON-THE-LAKE  
 DRAWINGS FOR CONSENT APPLICATION NO. B-21, 12  
*[Signature]*  
 SECRETARY-TREASURER

NIAGARA

LINE 3 ROAD (PUBLIC TRAVELLED ROAD)  
 (20.12 WIDE)



**NOTE**  
 THIS SKETCH IS INTENDED FOR USE OF THE COMMITTEE OF ADJUSTMENT ONLY.  
*William A. Mascoe*  
 WILLIAM A. MASCOE  
 ONTARIO LAND SURVEYOR

**METRIC NOTE**  
 DISTANCES SHOWN ON THIS PLAN ARE IN METRES AND CAN BE CONVERTED TO FEET BY DIVIDING BY 0.3048

**WILLIAM A. MASCOE**  
**SURVEYING LTD.**  
 49 EASTCHESTER AVE.  
 ST. CATHARINES, ONTARIO

DATE : SEPTEMBER 6, 2012 FILE : 9711