

SKETCH TO SHOW

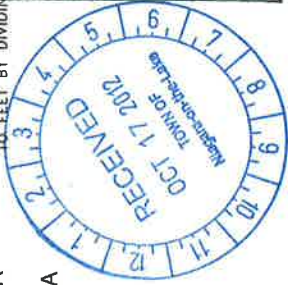
PART OF LOTS 154 AND 155
GEOGRAPHIC TOWNSHIP OF NIAGARA
TOWN OF NIAGARA-ON-THE-LAKE
REGIONAL MUNICIPALITY OF NIAGARA
SCALE = 1 : 2000 METRIC

Appendix "F"

NIAGARA

METRIC NOTE

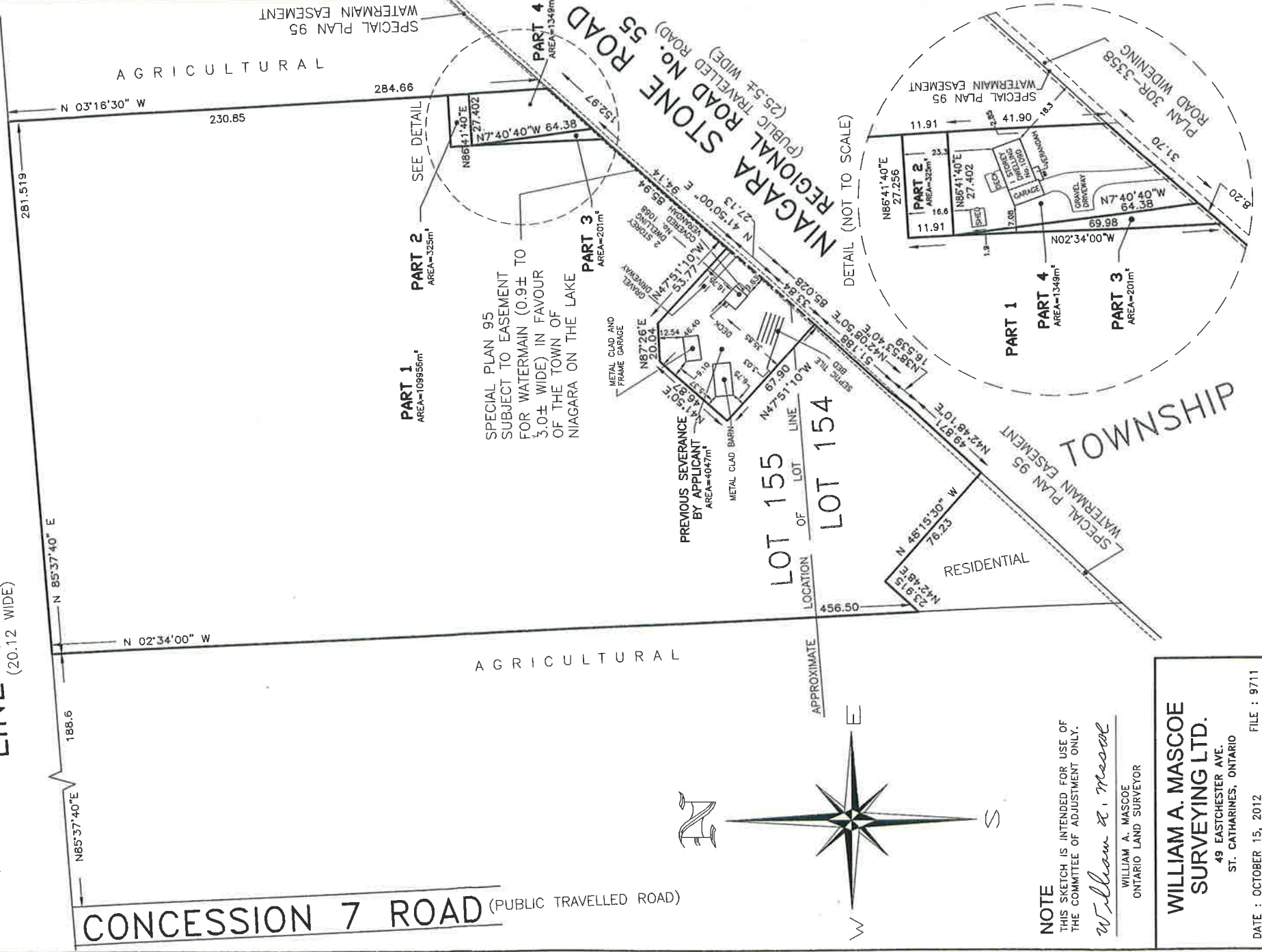
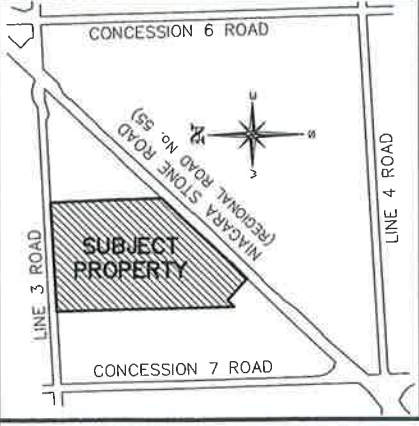
DISTANCES SHOWN ON THIS PLAN
ARE IN METRES, AND CAN BE CONVERTED
TO FEET BY DIVIDING BY 0.3048



TOWN OF NIAGARA-ON-THE-LAKE
DRAWINGS FOR CONSENT
APPLICATION NO. **B-26/12**

SECRETARY-TREASURER

LINE 3 ROAD (PUBLIC TRAVELLED ROAD)
(20.12 WIDE)



NOTE
THIS SKETCH IS INTENDED FOR USE OF
THE COMMITTEE OF ADJUSTMENT ONLY.

William A. Mascoe

WILLIAM A. MASCOE
ONTARIO LAND SURVEYOR

**WILLIAM A. MASCOE
SURVEYING LTD.**

49 EASTCHESTER AVE.
ST. CATHARINES, ONTARIO

DATE : OCTOBER 15, 2012 FILE : 9711