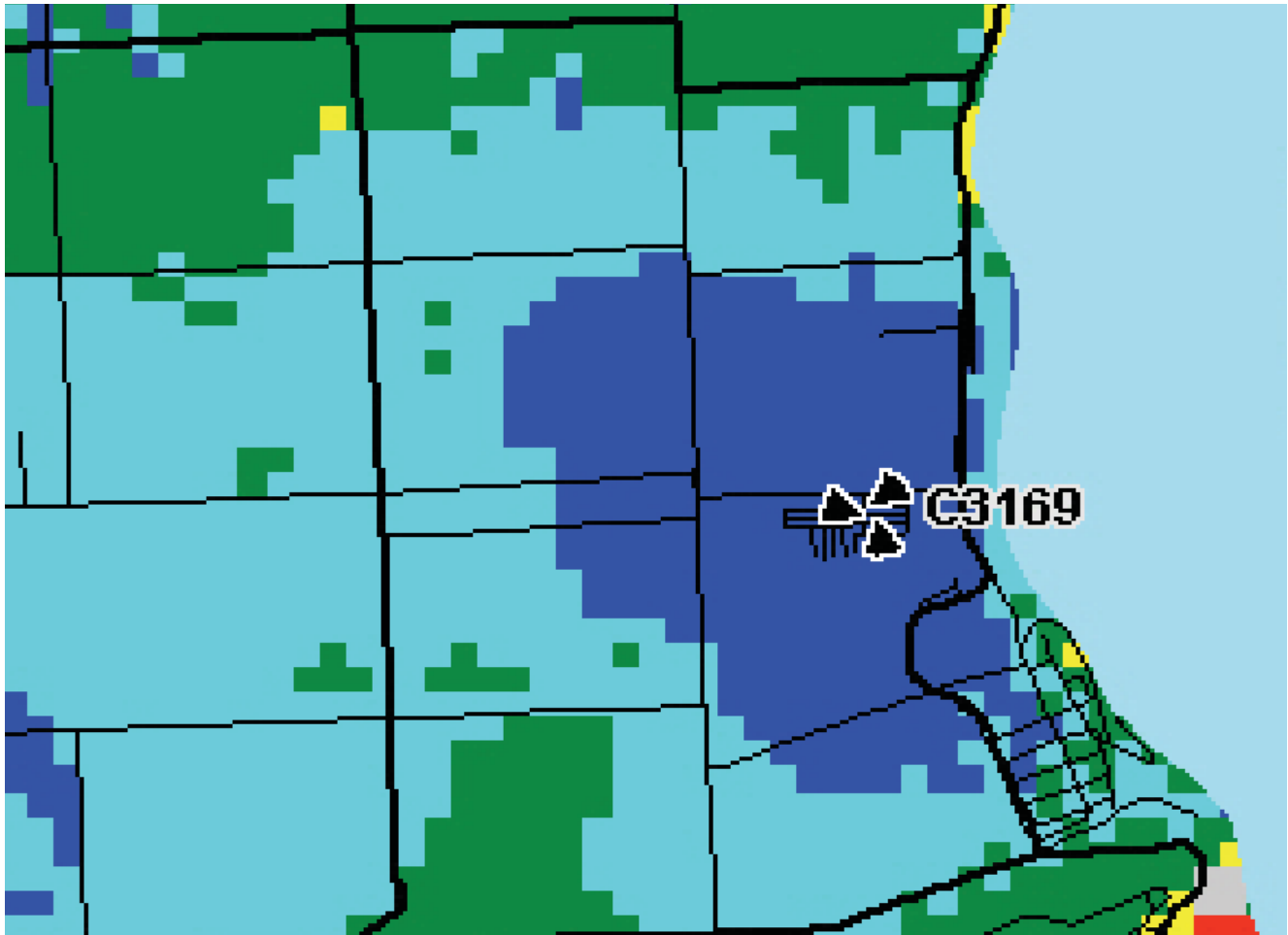


FUTURE COVERAGE WITH PROPOSED SITE



- Optimal coverage (dark and light blue) with site C3169 (Line 8) in operation
- A new 30m tower in this area will help to provide effective coverage to area residents while creating minimal visual intrusion
- The new site will help to provide reach and capacity inside and out of buildings as well as create a contiguous network with existing and future planned base station sites